

ATE Ready

Excellent for RoHS, Pb Free Applications

Multi-GHz Bandwidth Capability

All Metal Contact - No Elastomers

Down to .5mm Contact Pitch

Durability for High Volume Applications

.95mm Test Height

Family Contactors with Short Lead Times

Easily Replaceable Contacts

Offered in a broad range of standard and custom designed contactors and sockets for Chipscale, QFN, MLF and other flat pad devices, RC Scrub-R technology provides excellent oxide penetration with its linear wiping action. Made from unplated semi-precious metal, the RC Scrub-R is resistant to wear. RC Scrub-R Technology is a reliable discrete node, z-axis interconnect solution for high speed testing.

Ardent Concepts is focused on increasing electrical efficiencies and reducing connector costs. Ardent's RC Scrub-R technology is robust, scalable and cost effective. This extremely versatile compliant contact technology increases RF accuracy, lowers contactor cost, and provides reliable performance from development to production.



RoHS Ready ATE Test Sockets

Features

- Patented Compliant RC Scrub-R Contacts
- Discrete Node All-Metal Interface
- Low Self-Inductance
- Consistent Resistance

Benefits

- Oxide Penetrating Scrubbing Action
- Highly Reliable Contact & Long Life
- Better Signal Integrity
- Known Discrete Node Resistance Measurements

Mechanical Specifications

Free Length	.046 in	1.16 mm
Test Height	.038 in	0.95 mm
Travel	.008 in	0.20 mm
Translation	.004 in	0.10 mm
Contact Force	0.6-1.0 oz	17-28 g
Tip Coplanarity	.001 in	0.04 mm
Environmental	-40 to 155° C	
Housing Life	>1,000,000 cycles	
Contact Life	>100,000 cycles	

Other Resources

Ardent Concepts can provide a full range of design services for custom package socket requirements.

All RC Scrub-R Test Sockets are field service ready. Ardent Concepts offers comprehensive information on contactor refurbishment and provides refurbish services on request.

Detailed information on Ardent Concepts products is available for download at www.ardentconcepts.com

Electrical Specifications

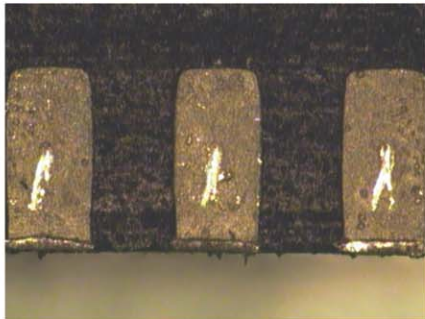
Self Inductance	~0.5	nH
Insertion Loss	< -1 dB	@ 10 GHz
Average Contact DC Resistance	30	milliohm Plated BeCu
	60	milliohm Paliney 7

Options

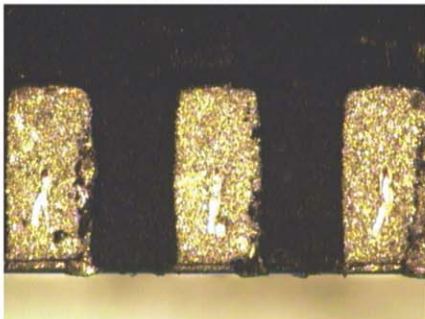
Contact Material	BeCu 25HT, Paliney- 7
Manual Actuator	Micro-Adjustable, Clip-On, Micro-Probe
Housing	Vespel, Torlon, Ultem, LCP

Spice Models and AC Characterization Reports Available 9/1/06.
Specification Subject to Change.

Witness Mark Images

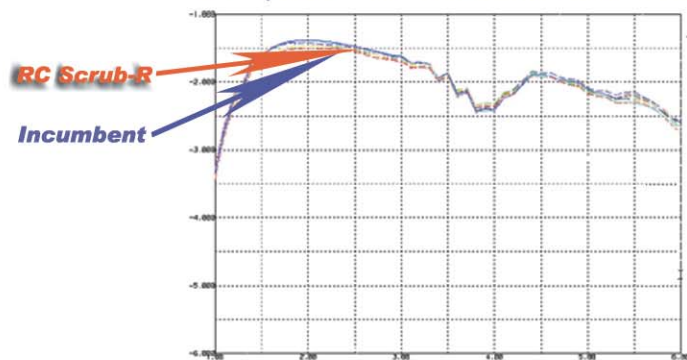


Tin Lead Solder Pads



RoHS Compliant Pads

ATE System Insertion Loss vs. Incumbent



ATE System Isolation vs. Incumbent

