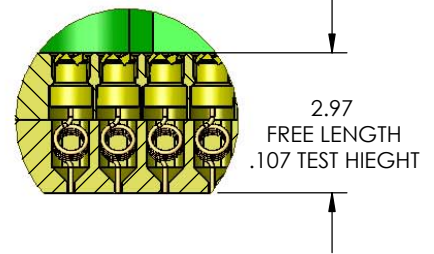
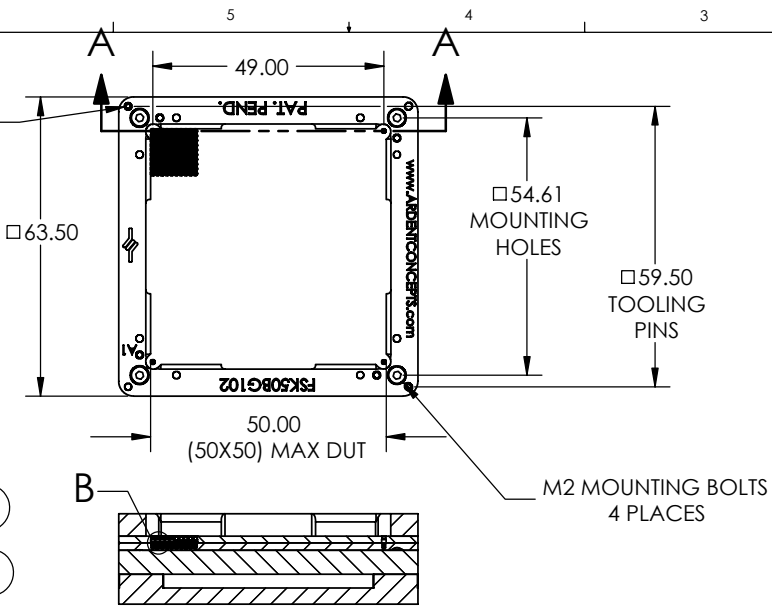


**PROPRIETARY AND CONFIDENTIAL**  
 THE INFORMATION CONTAINED IN THIS DRAWING IS THE SOLE PROPERTY OF ARDENT CONCEPTS, INC. ANY REPRODUCTION IN PART OR AS A WHOLE WITHOUT THE WRITTEN PERMISSION OF ARDENT CONCEPTS, INC. IS PROHIBITED.

REVISIONS			
REV.	DESCRIPTION	DATE	APPROVED
A	ECN05-0037, RELEASED	10/10/05	BMS



SECTION A-A

ITEM NO.	PART NUMBER	DESCRIPTION	QUANTITY
1	RC10-05	1.00mm REDUNDANT CONTACT	2500
2	O80FHCS0125	0-80 FLAT HEAD X .125	8
3	CE10BG04	BGA 1.00mm CONTACT ELEMENT	2500
4	FBP50GA102	BOTTOM PLATE, 50X50 1mm EVEN	1
5	FTP50GA102	TOP PLATE, 50X50 1mm EVEN	1
6	FGP50GA50	GUIDE PLATE 50X50 DUT	1
7	M20SHCS12	M2 SOCKET HEAD X 12mm	4
8	M15DP15	M1.5 DOWEL PIN X 8mm	2
9	M20SHCS03	M2 SOCKET HEAD X 3mm	4
10	FAF50GA102	ASSEMBLY FIXTURE, 50X50 1mm	REF
11	FBC50GA	BOTTOM COVER	1
12	FFP50GA102	50X50 1mm EVEN FOOTPRINT SPEC.	REF
13	FSA50GA	50X50 FAMILY STIFFENER	1
14	M20FHCS04	M2 FLAT HEAD X 4mm	4

**METRIC**  
 UNLESS OTHERWISE SPECIFIED, DIMENSIONS IN MILLIMETERS  
 TOLERANCES:  
 ANGLES: ±3 X.XX = ±.1 X.XX = ±.05 X.XXX = ±.02

DRAWN: BMS 10/10/05  
 CHECKED:  
 ENG APPR.:

**ARDENT CONCEPTS**  
 4 MERRILL INDUSTRIAL DR., SUITE 102  
 HAMPTON, NH 03842  
 (603) 926-2517

SIZE: **B** TITLE: 50X50 FAMILY SOCKET ASSEMBLY

CHANGE NOTE PROJECTION  
 MATERIAL: ---  
 FINISH: ---

INTERPRET GEOMETRIC TOLERANCING PER: ANSI Y14.5M 1982  
 DWG. NO. FSK50GA102  
 WWW.ARDENTCONCEPTS.COM SCALE: 1:1 WEIGHT: SHEET 1 OF 1