

SPECIFICATION SHEET

RC Scrub-R™

RoHS Ready ATE Test Sockets for
High Speed Chipscale Package Test

No Board Wear

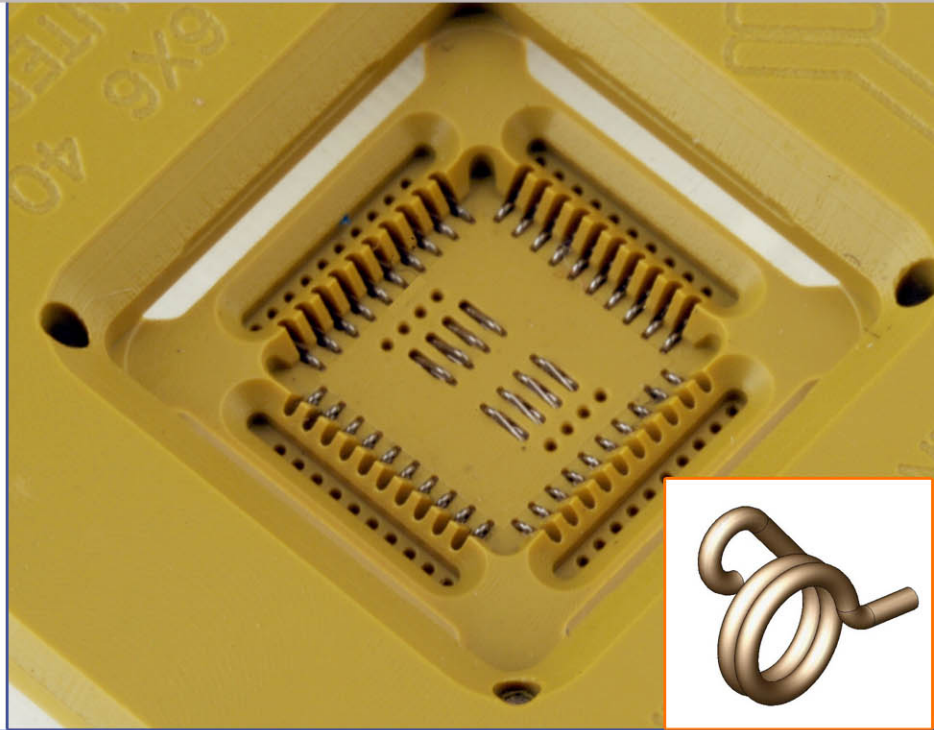
Long Cycle Life

24 GHz AC Performance

Easy to Replace Contact Sets

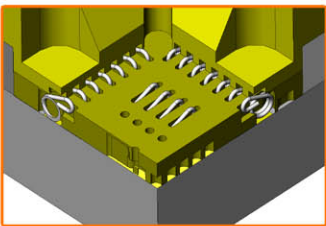
Cost Effective Components

Match to Existing Board Footprints

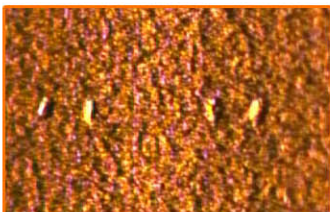


Offered in a broad range of standard and custom designed contactors and sockets for Chipscale, QFN, MLF and other flad pad devices, RC Scrub-R Technology provides excellent oxide penetration with its linear wiping action. Made from unplated semi-precious metal, the RC Scrub-R contact set is resistant to wear and field service ready with snap-in replacement parts.

RC Scrub-R Technology is a reliable discrete node, z-axis interconnect solution for high speed testing. With cost effective, easy to replace contact sets, these sockets will provide millions of reliable insertions for a fraction of the cost of legacy solutions, with all the RF performance



Cross Section of RC Scrub-R Socket



Board Pads After 250K Insertions

FEATURES

- Patented Compliant RC Scrub-R Contact Set
- Discrete Node All-Metal Surface
- Low Self-Inductance
- Consistent Resistance

BENEFITS

- Oxide Penetrating X-Y Scrubbing Action
- Highly Reliable Contact & Long Life
- Better Signal Integrity
- Known Discrete node Resistance Measurements

SPECIFICATION SHEET

ELECTRICAL SPECIFICATIONS

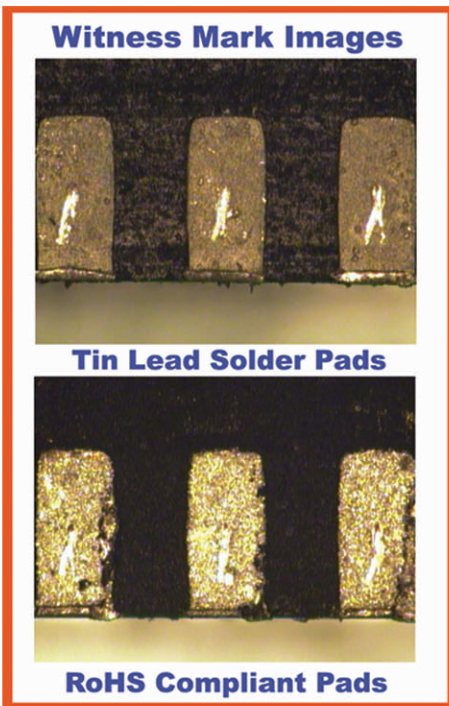
Self Inductance	.34 nH
Insertion Loss	< -1 dB to 24 GHz
DC Resistance	60 milliohm

MECHANICAL SPECIFICATIONS

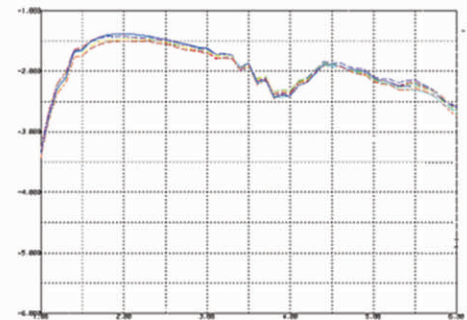
Free Length	1.04-1.09 mm
Test Height	.94 mm
Travel	.10-.15 mm
Translation	.10 mm
Contact Force	11-17 g
Tip Coplanarity	+/- .03 mm
Housing Life	> 2,000,000 cycles
Contact Life	> 500,000 cycles

ENVIRONMENTAL

Temp	-40 to 155 C
------	--------------



ATE System Insertion Loss vs. Incumbent



ATE System Isolation vs. Incumbent

