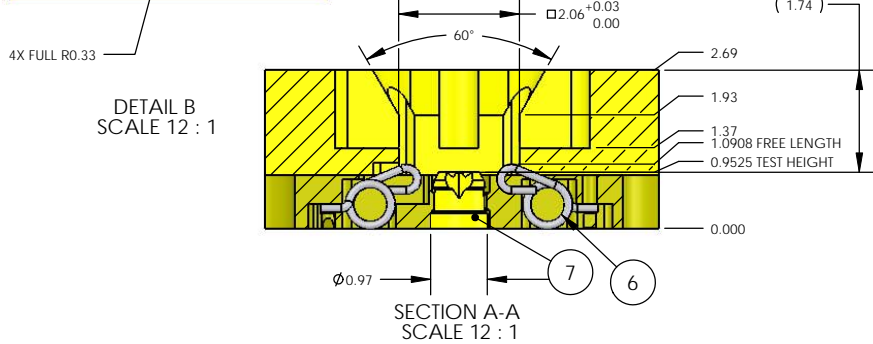
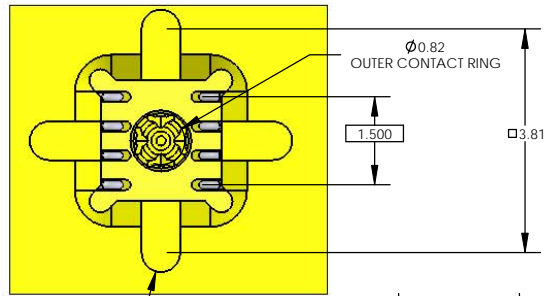
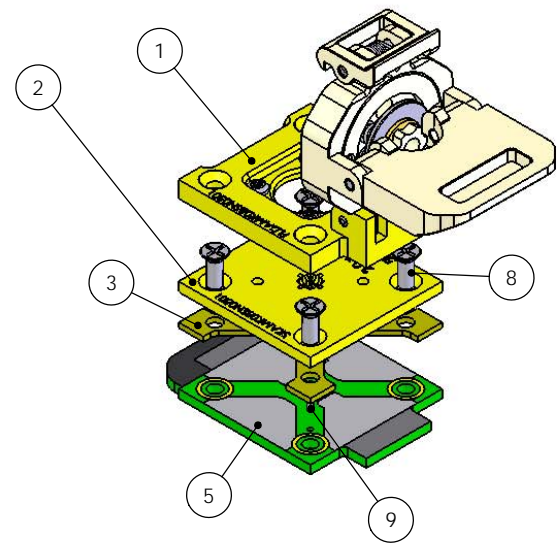
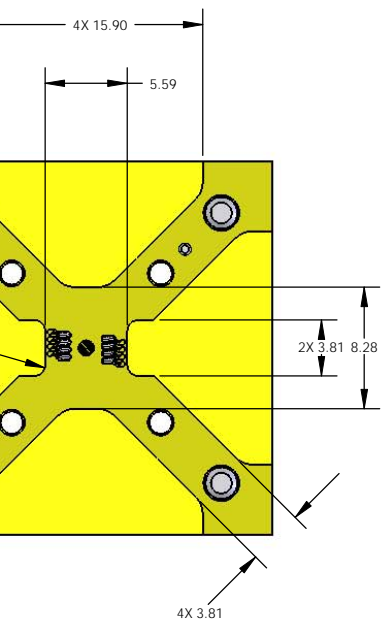
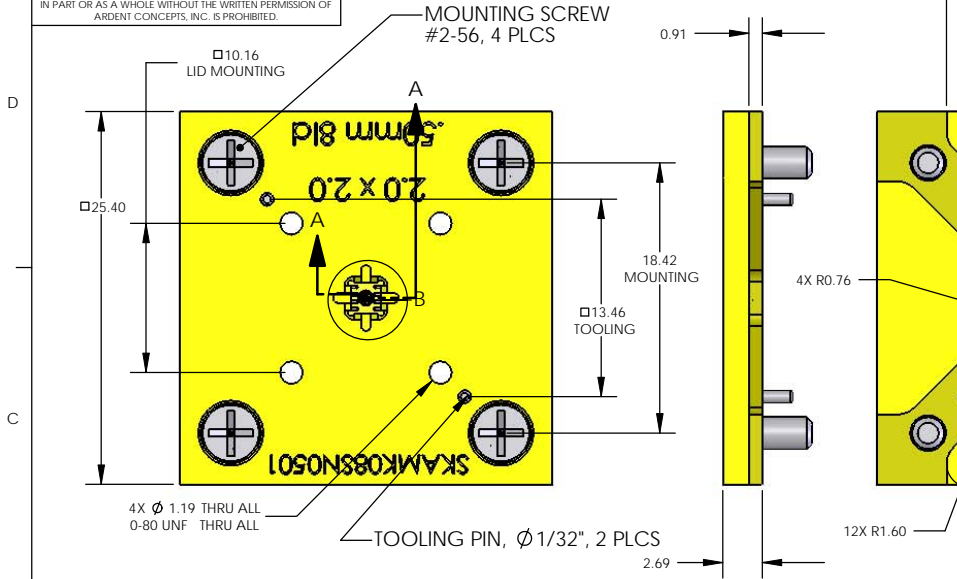


**PROPRIETARY AND CONFIDENTIAL**  
 THE INFORMATION CONTAINED IN THIS DRAWING IS THE SOLE PROPERTY OF ARDENT CONCEPTS, INC. ANY REPRODUCTION IN PART OR AS A WHOLE WITHOUT THE WRITTEN PERMISSION OF ARDENT CONCEPTS, INC. IS PROHIBITED.

REVISIONS			
REV.	DESCRIPTION	DATE	APPROVED
A	RELEASED, ECN10-0619	08/23/10	SD



ITEM NO.	PART NUMBER	DESCRIPTION	ASSY/QTY.
1	FLDAMK08SN0501	CLAMSHELL LID WITH ADAPTER PLATE	REF
2	GPAMK08SN0501	GUIDE PLATE	1
3	INAMK08SN0501	INSULATOR	1
4	SCAMK08SN0501	SHIPPING COVER	1
5	FPAMK08SN0501	FOOTPRINT SPECIFICATION	REF
6	SC05-06	.5mm .005\" Pal-7 RC Scrub-R	8
7	CEGS0501	GROUND SLUG	1
8	256FHCS0250	2-56 FLAT HEAD SCREW	4
9	O31DP0188	1/32 DOWEL PIN X .188"	2
10	MEASURED		1

<b>METRIC</b> UNLESS OTHERWISE SPECIFIED. TOLERANCES: ANGLES: ± 3° X.X ± 1° X.XX ± 0.05 X.XXX ± 0.02		DRAWN: SD DATE: 07/24/09 CHECKED: ENG APPR:	<b>ARDENT CONCEPTS</b> 4 MERRILL INDUSTRIAL DR, SUITE 102 HAMPTON, NH 03842 (603) 926-2517
CHANGE: --- MATERIAL: --- FINISH: ---	SIZE: <b>B</b> TITLE: 0.50mm SOCKET ASSEMBLY 2.0 mm x 2.0 mm, 8 ld	INTERPRET GEOMETRIC TOLERANCING PER: ANSI Y14.5M 1982 DWG. NO.: SKAMK08SN0501 REV: A	
WWW.ARDENTCONCEPTS.COM		SCALE: 3:1	WEIGHT: --- SHEET 1 OF 1