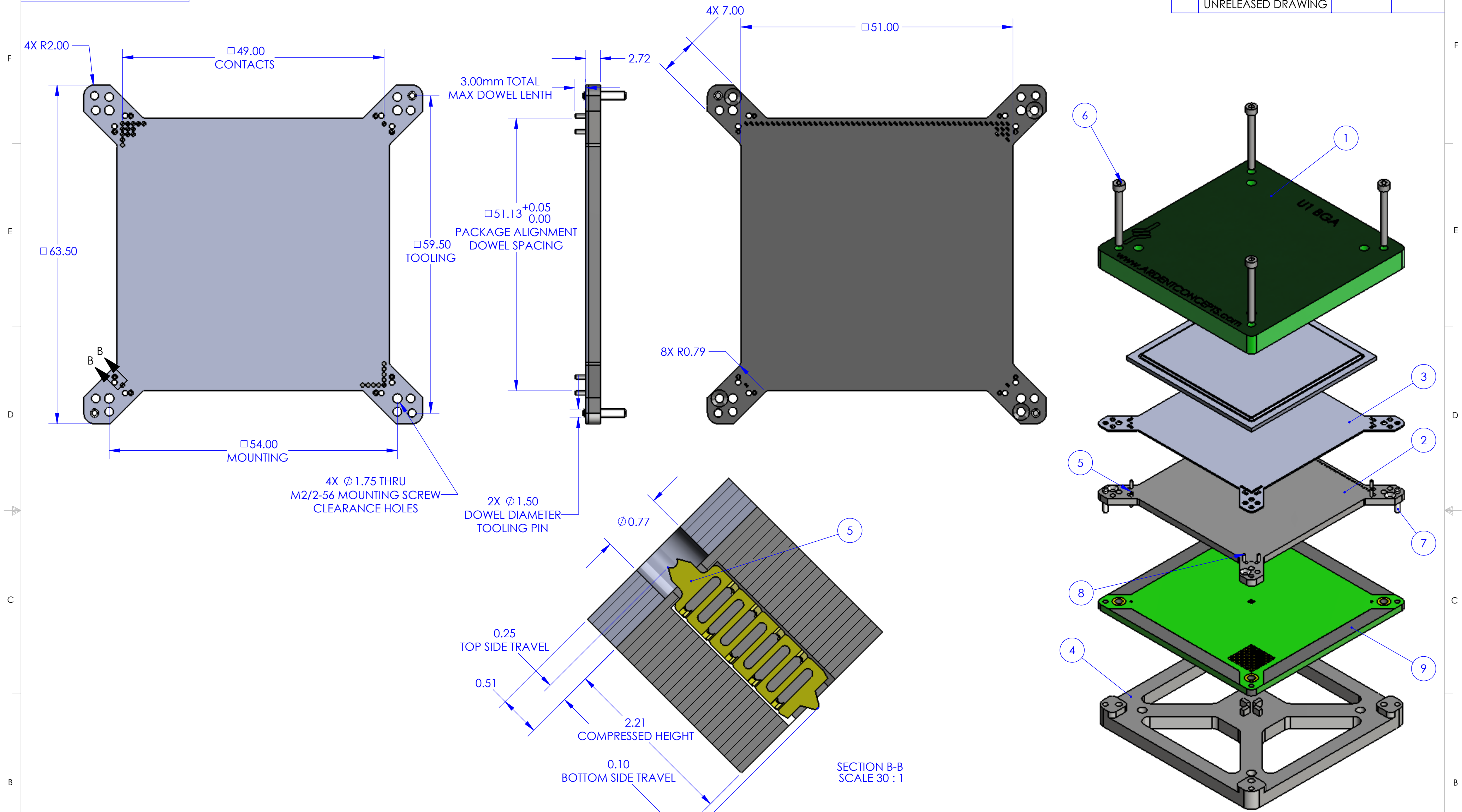


PROPRIETARY AND CONFIDENTIAL
 THE INFORMATION CONTAINED IN THIS DRAWING IS THE SOLE PROPERTY OF ARDENT CONCEPTS, INC. ANY REPRODUCTION IN PART OR AS A WHOLE WITHOUT THE WRITTEN PERMISSION OF ARDENT CONCEPTS, INC. IS PROHIBITED.

REVISIONS			
REV.	DESCRIPTION	DATE	APPROVED
1	CREATED NEW UNRELEASED DRAWING	06/20/12	JH



- NOTE: 1. CONTACT FORCE~ 40 GRAMS PER CONTACT
 2. CONTACT RESISTANCE~ 0.050 OHMS
 3. CONTACT INSERTION LOSS~ 19.07 AT -1dB
 4. IMPEDANCE~ 61.6 OHMS
 5. USE BOARD STIFFNER WITH SOCKET
 6. CONTACT CURRENT CARRYING CAPACITY~ 1 AMP @ 30 DEGREES CELCIUS TEMPERATURE RISE
 7. FOOTPRINT SPEC # ~ FFP2500CR1002

ITEM NO.	PART NUMBER	DESCRIPTION	expanded/QTY.
1	FSL2500CR1002	SCREW DOWN LID	1
2	FIN2500CR1002	INSULATOR, 2500	1
3	FBG2500CR1002	BGA ALIGNMENT SHEET, 2500	1
4	BS2500CR1002	BOARD STIFFENER	1
5	CR08-01	RC Connect-R	2500
6	M20SHCS20	M2 SOCKET HEAD CAP SCREW X 20mm L	4
7	M15DP08	M1.5 X 8mm DOWEL, STEEL, 9159A008	2
8	031DP0188	1/32" DOWEL PIN X 3/16", 98381A364	8
9	FFP2500CR1002	51mm, 2500 U1 Footprint Specification	REF

CHANGE	NOTE	PROJECTION	METRIC UNLESS OTHERWISE SPECIFIED.	ARDENT CONCEPTS 130 LEDGE ROAD, UNIT 2 SEABROOK, NH 03874 (603) 474-1760
MATERIAL: --- FINISH: ---			TOLERANCES: ANGLES: ± 3 X.X = ±.1 X.XX = ±.05 X.XXX = ±.025	
SIZE: C		TITLE: MODIFIED U1 FOR 51mm 2500 BGA		DWG. NO. FSK2500CR1002 REV 1
INTERPRET GEOMETRIC TOLERANCING PER: ANSI Y14.5M 1982		SCALE: 1:1 WEIGHT: SHEET 1 OF 1		
WWW.ARDENTCONCEPTS.COM				