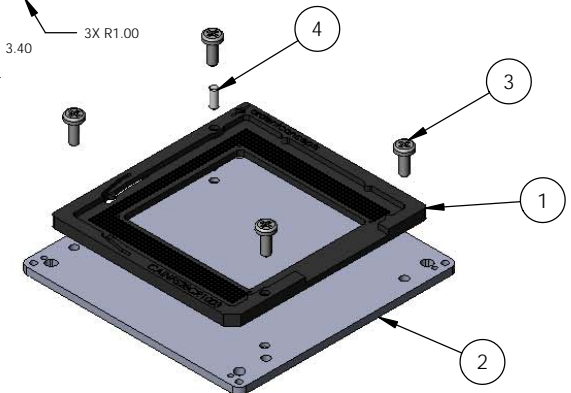
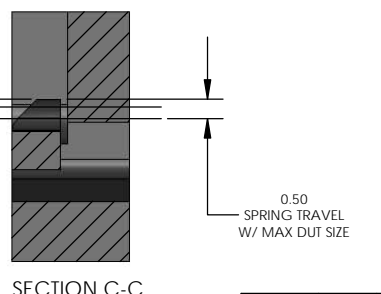
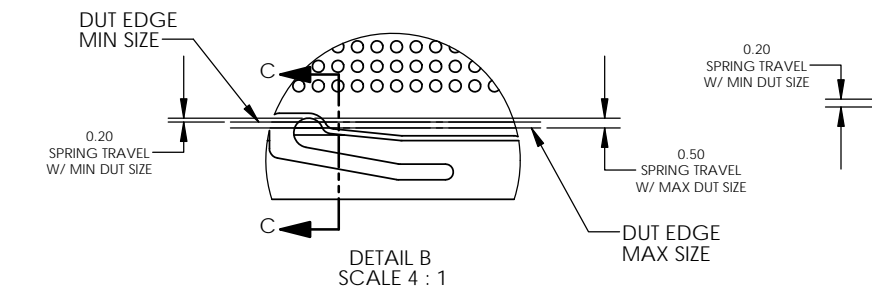
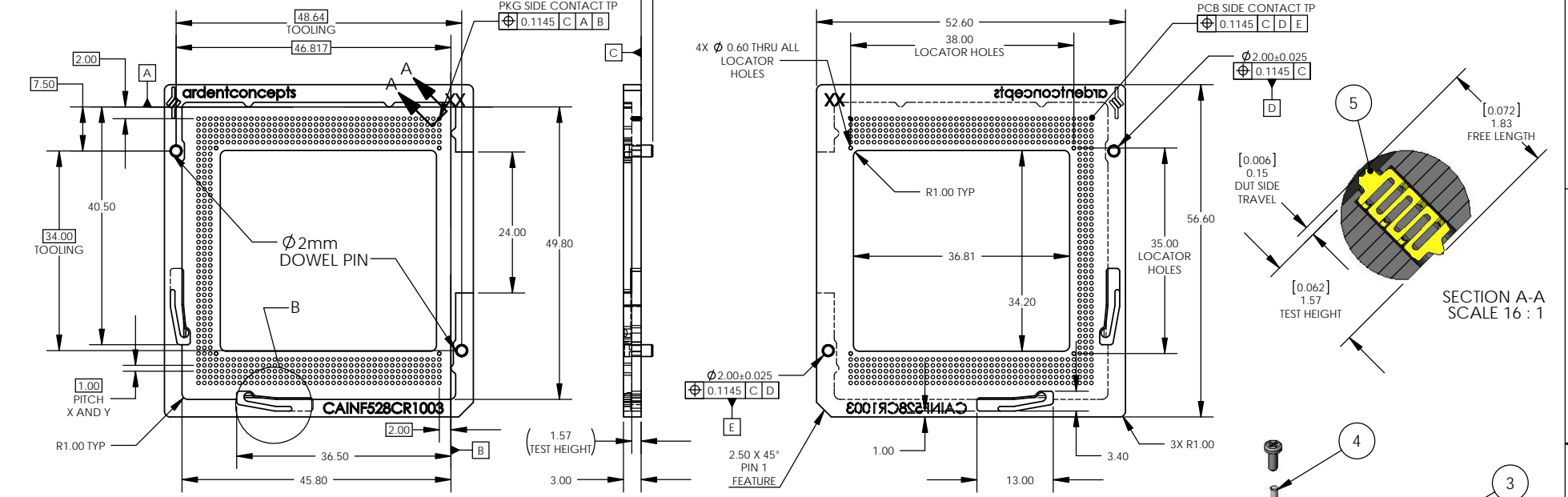


8 7 6 5 4 3 2 1

PROPRIETARY AND CONFIDENTIAL
 THE INFORMATION CONTAINED IN THIS DRAWING IS THE SOLE
 PROPERTY OF ARDENT CONCEPTS, INC. ANY REPRODUCTION
 IN PART OR AS A WHOLE WITHOUT THE WRITTEN PERMISSION OF
 ARDENT CONCEPTS, INC. IS PROHIBITED.

42X46 NODE ARRAY
39X36 EMPTY
3 COLUMNS LEFT
5 ROWS TOP AND BOTTOM

REVISIONS			
REV.	DESCRIPTION	DATE	APPROVED
A	RELEASED, ECN14-1446	07/22/14	AG



ITEM NO.	PART NUMBER	DESCRIPTION	Shipping/QT.Y.
1	ININF528CR1003	INSULATOR	1
2	BCINF528CR1003	MODIFIED BOTTOM COVER	1
3	256PHCS0250	#2-56 PAN HEAD X 1/4" L	4
4	M20DP05	M2 DOWEL PIN X 5mm, 91585A915	2
5	CR08-062	RC Connect-R	528

CHANGE	NOTE	PROJECTION	METRIC UNLESS OTHERWISE SPECIFIED. TOLERANCES: ANGLES: ±3 X.X ±.1 X.XX ±.05 X.XXX ±.025	ARDENT CONCEPTS <small>INCORPORATED</small> 130 LEDGE ROAD, UNIT 2 SEABROOK, NH 03874 (603) 474-1760
MATERIAL: ---		SIZE B	TITLE: MACHINED CONNECTOR, 45x49 528 LD DEVICE	
FINISH: ---		INTERPRET GEOMETRIC TOLERANCING PER: ANSI Y14.5M 1982	DWG. NO. CAINF528CR1003	REV A
WWW.ARDENTCONCEPTS.COM			SCALE: 3:1	SHEET 1 OF 1

8 7 6 5 4 3 2 1