

REVISIONS			
REV.	DESCRIPTION	DATE	APPROVED
A	RELEASED, ECN16-1926	08/23/16	SD

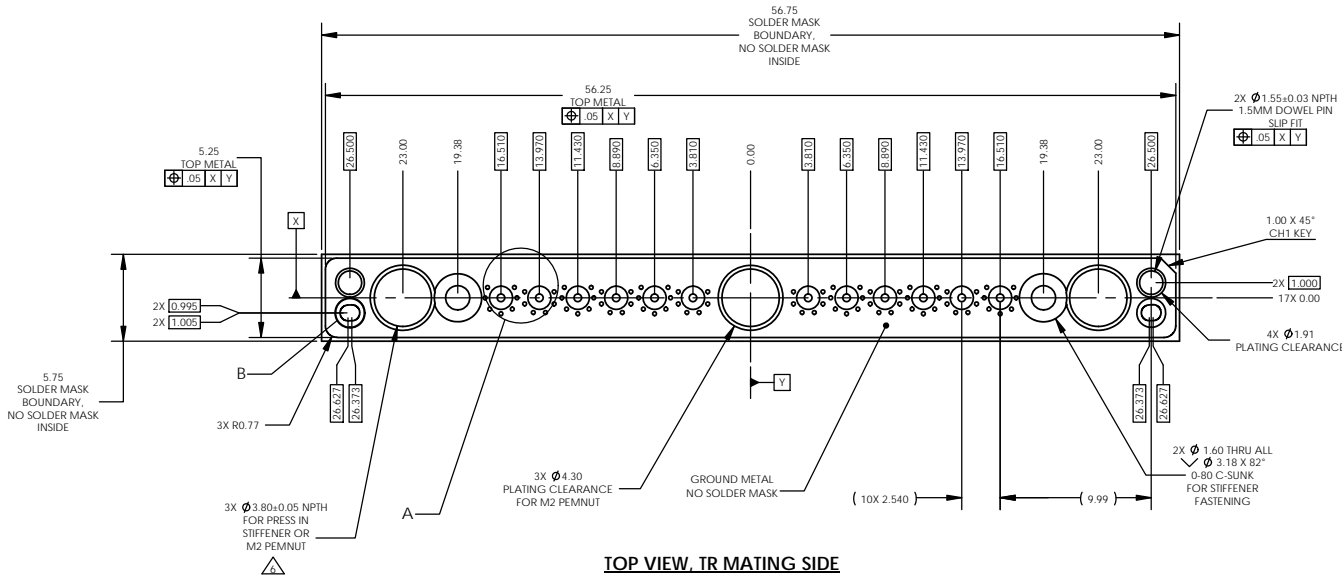
NOTES:

- RECOMMENDED PLATING: .000030"-.000050" HARD GOLD, OR IMMERSION GOLD, OVER .000150" NICKEL. SINCE THE UNIT IS COMPRESSION MOUNT, A NOBLE METAL PLATING SHOULD BE USED, NO TIN OR LEAD PLATING PERMISSABLE.
- DIMENSIONS DEPENDENT ON PCB DIELECTRIC MATERIAL AND THICKNESS. STATED DIMENSIONS ARE FOR MEGTRON 6 MATERIAL (HVLP), Dk 3.6, AT .00465" THICK WITH NO TOP SOLDERMASK. FOR OTHER PCB DIELECTRICS AND THICKNESSES, CONSULT THE FACTORY.
- MINIMUM COPPER THICKNESS FOR ALL LAYERS IS 1/2 OUNCE.
- THESE DIMENSIONS VARY WITH PCB MATERIAL, DIELECTRIC CONSTANT AND THICKNESS. THE CIRCUIT MUST BE DESIGNED CAREFULLY IN ORDER TO MINIMIZE COUPLING TO SURROUNDING OR UNDERLYING LAYERS. CONSULT WITH FACTORY FOR HIGH FREQUENCY SIMULATION TO DETERMINE THESE DIAMETERS BASED ON FINAL PCB STACK-UP INFORMATION.
- SIGNAL TRACES OUTSIDE THE CONNECTOR AREA SHOULD BE 50+/-2 OHMS IMPEDANCE.
- BOARD STIFFENER RECOMMENDED FOR PCBs LESS THAN .063" (1.60mm) THICK. OPTIONALLY ON THICKER PCBs, AN M2 PEMNUT MAY BE USED. QUICK LATCH CAN BE USED FOR BOARDS .063" (1.60mm) OR THICKER.
- ALL VIAS MUST BE 10 MILS IN DIAMETER, VIA IN PAD (VIP), NON-CONDUCTIVE FILL, CAPPED, PLANARIZED FLAT, WITH PLATING.

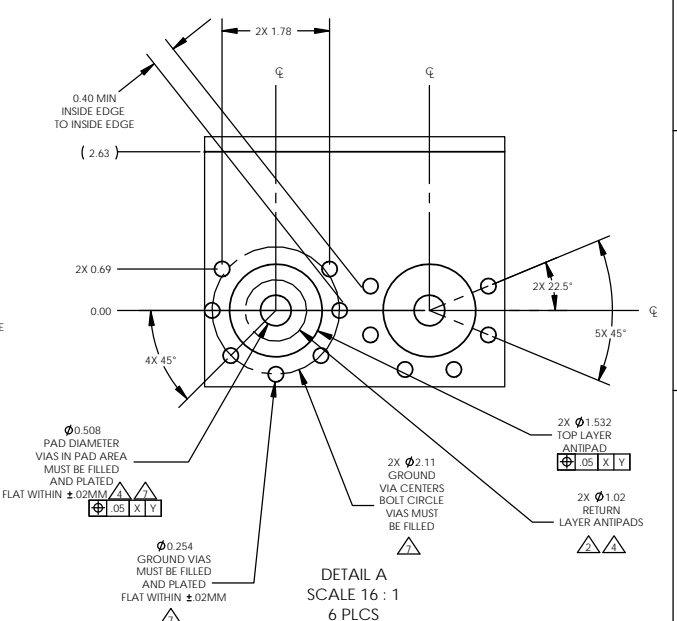
CHANGE NOTE PROJECTION	MATERIAL	SIZE	TITLE	METRIC UNLESS OTHERWISE SPECIFIED. TOLERANCES: ANGLES: ±3 X.X = ±1 X.XX = ±05 X.XXX = ±025	<b>ARDENT CONCEPTS</b> 130 LEDGE ROAD, UNIT 2 SEABROOK, NH 03874 (603) 474-1760
	SEE NOTE	<b>C</b>	STANDARD 12 CHANNEL FOOTPRINT SPECIFICATION	INTERPRET GEOMETRIC TOLERANCING PER: ANSI Y14.5M 1982 DWG. NO. FP12X1-2.54 WWW.ARDENTCONCEPTS.COM SCALE: 3:1 WEIGHT: SHEET 1 OF 5	
DRAWN BY: S. DIAZ CHECKED BY: J. DISONNA APPROVED BY: S. WINDHE APPROVED BY: D. EMMA	DATE: 07/12/16 DATE: 08/23/16 DATE: /./. DATE: /./.	FINISH SEE NOTE	REV <b>A</b>		



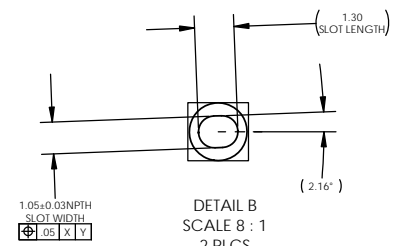
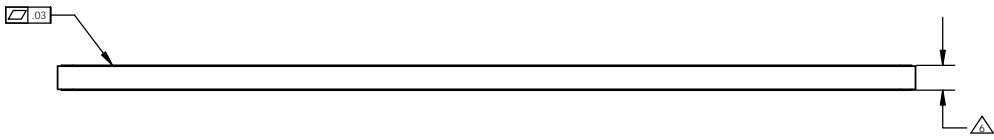
PROPRIETARY AND CONFIDENTIAL  
 THE INFORMATION CONTAINED IN THIS DRAWING IS THE SOLE PROPERTY OF ARDENT CONCEPTS, INC. ANY REPRODUCTION IN PART OR AS A WHOLE WITHOUT THE WRITTEN PERMISSION OF ARDENT CONCEPTS, INC. IS PROHIBITED.



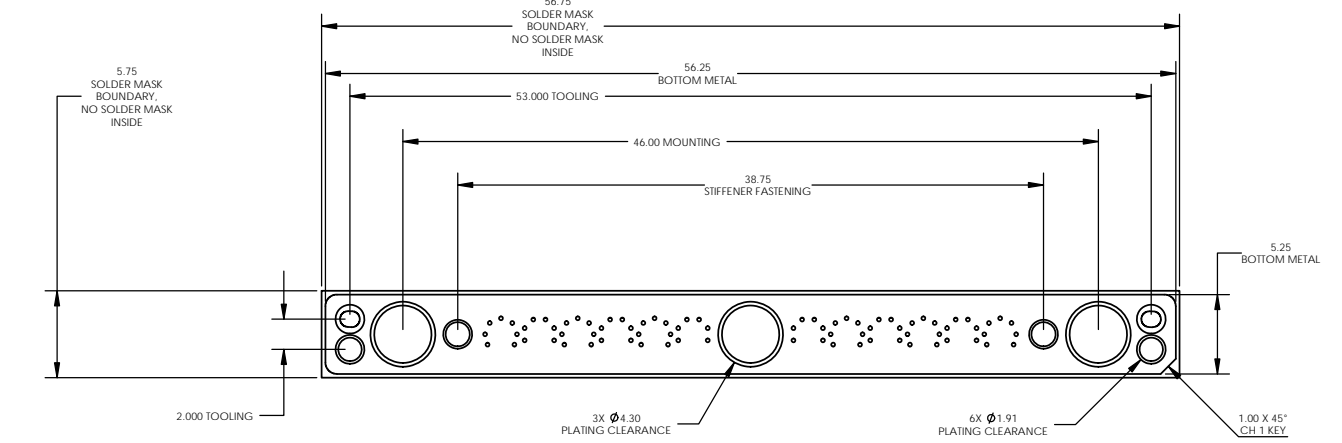
TOP VIEW, TR MATING SIDE



DETAIL A  
 SCALE 16 : 1  
 6 PLCS



DETAIL B  
 SCALE 8 : 1  
 2 PLCS



BOTTOM VIEW, STIFFENER MATING SIDE

 130 LEDGE ROAD, UNIT 2 SEABROOK, NH 03874 (603) 474-1760	SIZE <b>C</b>	TITLE: STRIPLINE, STRAIGHT MOUNT
	DWG. NO. FP12X1-2.54	REV <b>A</b>
WWW.ARDENTCONCEPTS.COM		SCALE: 3:1
SHEET 3 OF 5		



