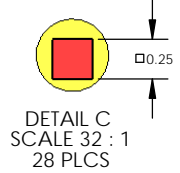
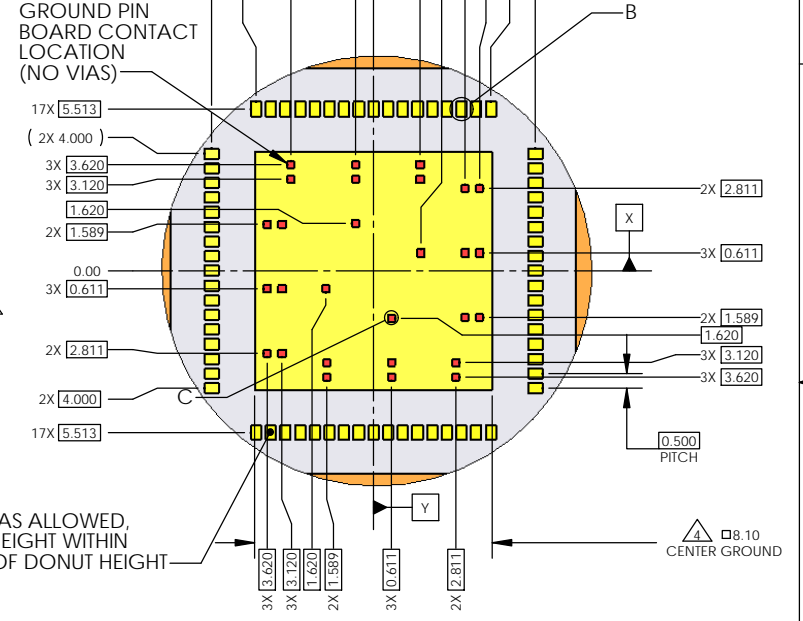
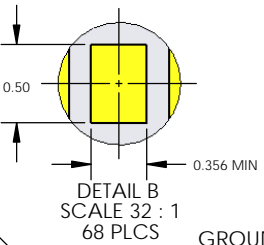
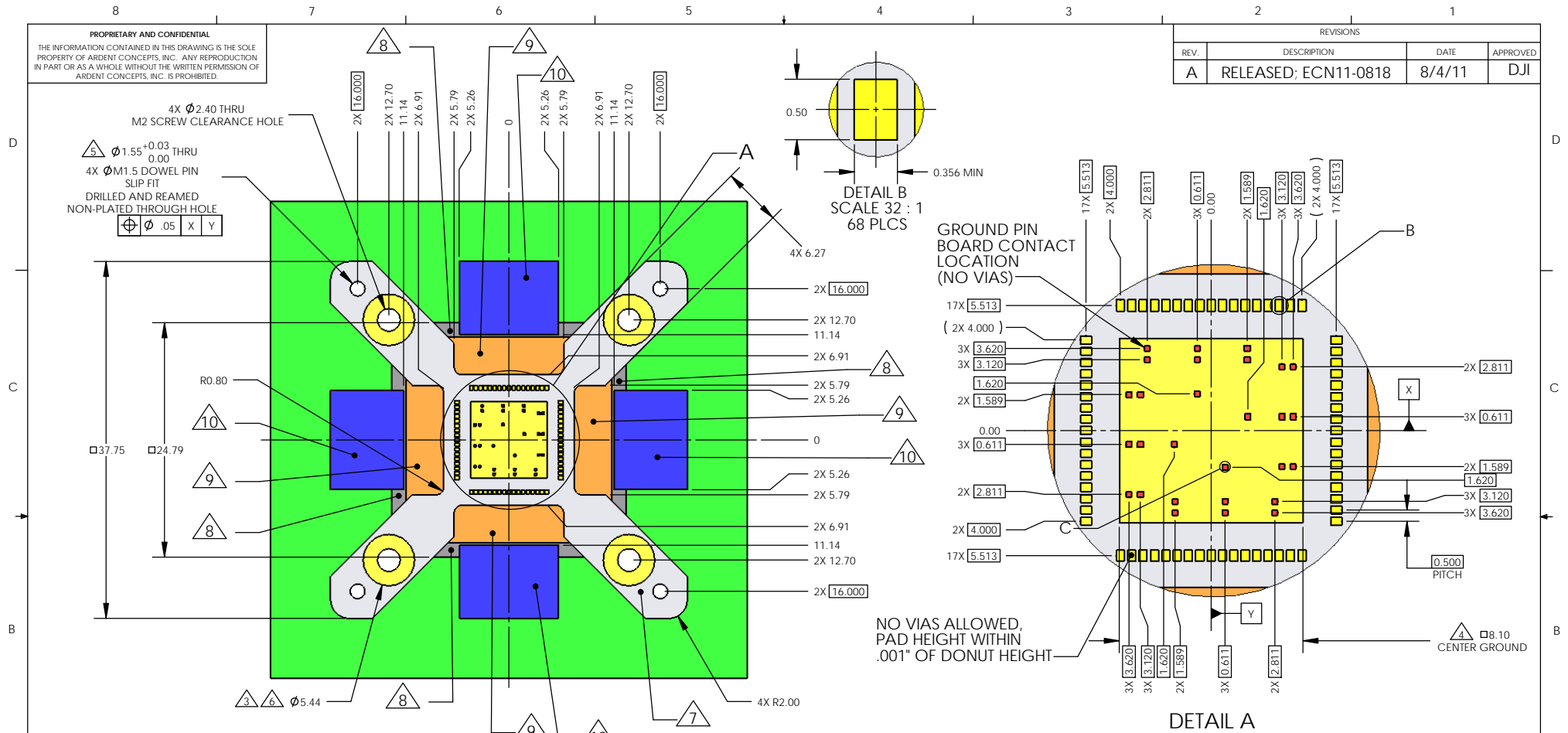


**PROPRIETARY AND CONFIDENTIAL**  
 THE INFORMATION CONTAINED IN THIS DRAWING IS THE SOLE PROPERTY OF ARDENT CONCEPTS, INC. ANY REPRODUCTION IN PART OR AS A WHOLE WITHOUT THE WRITTEN PERMISSION OF ARDENT CONCEPTS, INC. IS PROHIBITED.

| REVISIONS |                      |        |          |
|-----------|----------------------|--------|----------|
| REV.      | DESCRIPTION          | DATE   | APPROVED |
| A         | RELEASED; ECN11-0818 | 8/4/11 | DJI      |



- NOTES:
- THIS DRAWING SHOWS A PATTERN FOR A 10x10, 0.50mm PITCH DEVICE WITH 68 PERIMETER LEADS, A GROUND SLUG, AND 28 GROUND LEADS.
  - CENTER OF DEVICE PATTERN TO BE COINCIDENT WITH CENTER OF PAD PATTERN ON PERFORMANCE BOARD
  - PLATED DONUTS AROUND MOUNTING HOLES TO BE SAME HEIGHT AS PADS ON PERFORMANCE BOARD
  - PAD TO PAD TO MOUNTING DONUT COPLANARITY TO BE WITHIN .001".
  - TOOLING HOLES TO BE NON-PLATED THRU HOLES DRILLED AND REAMED TO SIZE
  - RECOMMENDED PLATING FOR PADS .000200" NICKEL UNDER .000050" GOLD MINIMUM.
  - THERE SHOULD BE NO SOLDERMASK UNDER THE SOCKET AT ALL.
  - 0.116" DECOUPLING CLEARANCE
  - 0.070" CLEARANCE TIL GUIDE PLATE
  - 0.053" LID LATCH CLEARANCE

|  |  |  |   |
|--|--|--|---|
| <b>METRIC</b><br>UNLESS OTHERWISE SPECIFIED.<br>TOLERANCES:<br>ANGLES: ±3 X.XX ±.1<br>X.XX ±.05<br>X.XXX ±.025 |  | DRAWN: DJI<br>DATE: 8/2/11<br>CHECKED:<br>ENG APPR:  | <br>4 MERRILL INDUSTRIAL DR, SUITE 102<br>HAMPTON, NH 03842<br>(603) 926-2517 |
| CHANGE NOTE PROJECTION<br>MATERIAL ---<br>FINISH ---   |  | SIZE: <b>B</b><br>TITLE: 10X10, 68LD, 0.50mm FOOTPRINT SPECIFICATION<br>DWG. NO. FFP10X1068SN0501<br>INTERPRET GEOMETRIC TOLERANCING PER: ANSI Y14.5M 1982<br>WWW.ARDENTCONCEPTS.COM SCALE: 5:2 WEIGHT: SHEET 1 OF 1 |   |