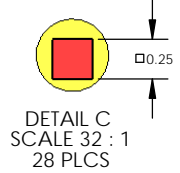
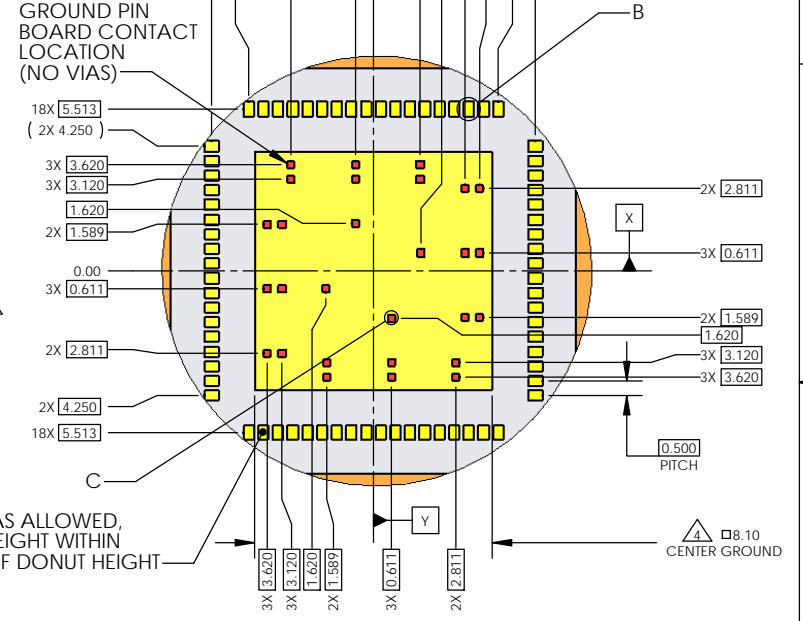
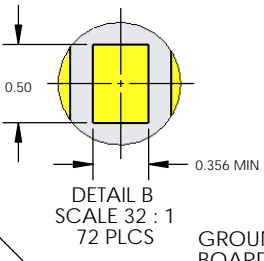
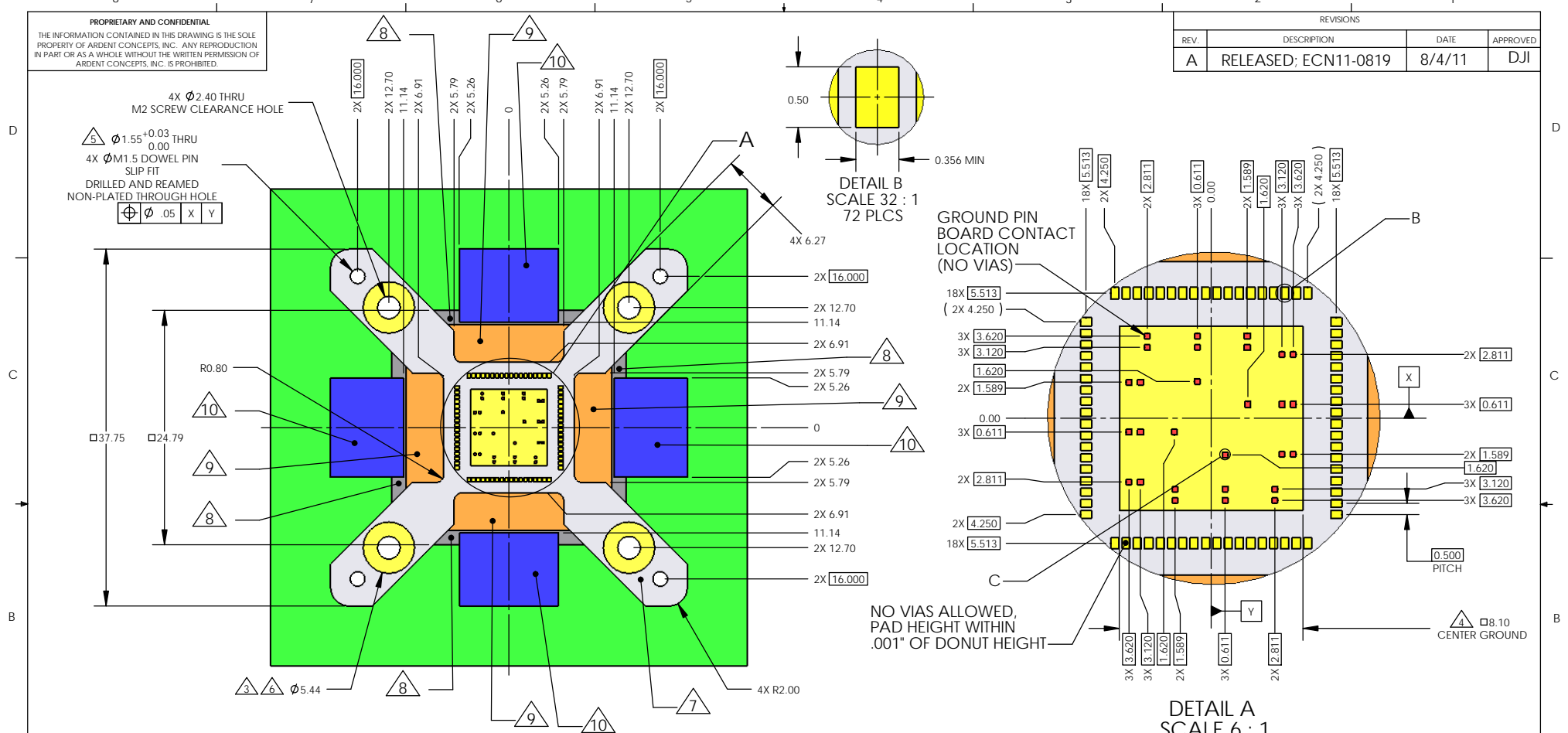


**PROPRIETARY AND CONFIDENTIAL**  
 THE INFORMATION CONTAINED IN THIS DRAWING IS THE SOLE PROPERTY OF ARDENT CONCEPTS, INC. ANY REPRODUCTION IN PART OR AS A WHOLE WITHOUT THE WRITTEN PERMISSION OF ARDENT CONCEPTS, INC. IS PROHIBITED.

REVISIONS			
REV.	DESCRIPTION	DATE	APPROVED
A	RELEASED; ECN11-0819	8/4/11	DJI



- NOTES:
- THIS DRAWING SHOWS A PATTERN FOR A 10x10, 0.50mm PITCH DEVICE WITH 72 PERIMETER LEADS, A GROUND SLUG, AND 28 GROUND LEADS.
  - CENTER OF DEVICE PATTERN TO BE COINCIDENT WITH CENTER OF PAD PATTERN ON PERFORMANCE BOARD
  - PLATED DONUTS AROUND MOUNTING HOLES TO BE SAME HEIGHT AS PADS ON PERFORMANCE BOARD
  - PAD TO PAD TO MOUNTING DONUT COPLANARITY TO BE WITHIN .001".
  - TOOLING HOLES TO BE NON-PLATED THRU HOLES DRILLED AND REAMED TO SIZE
  - RECOMMENDED PLATING FOR PADS .000200" NICKEL UNDER .000050" GOLD MINIMUM.
  - THERE SHOULD BE NO SOLDERMASK UNDER THE SOCKET AT ALL.
  - 0.116" DECOUPLING CLEARANCE
  - 0.070" CLEARANCE TIL GUIDE PLATE
  - 0.053" LID LATCH CLEARANCE

<b>METRIC</b> UNLESS OTHERWISE SPECIFIED. TOLERANCES: ANGLES: ±3 X.XX = ±1 X.XX = ±0.5 X.XXX = ±0.025		DRAWN: DJI DATE: 8/2/11 CHECKED: ENG APPR:	 <b>ARDENT CONCEPTS</b> <small>Manufacturing and Assembly Solutions</small> 4 MERRILL INDUSTRIAL DR, SUITE 102 HAMPTON, NH 03842 (603) 926-2517
CHANGE: [Symbol] NOTE: [Symbol] PROJECTION: [Symbol] MATERIAL: --- FINISH: ---	SIZE: <b>B</b> TITLE: 10X10, 72LD, 0.50mm FOOTPRINT SPECIFICATION INTERPRET GEOMETRIC TOLERANCING PER: ANSI Y14.5M 1982 DWG. NO. FFP10X1072SN0501 WWW.ARDENTCONCEPTS.COM SCALE: 5:2 WEIGHT: SHEET 1 OF 1	REV: <b>A</b>	