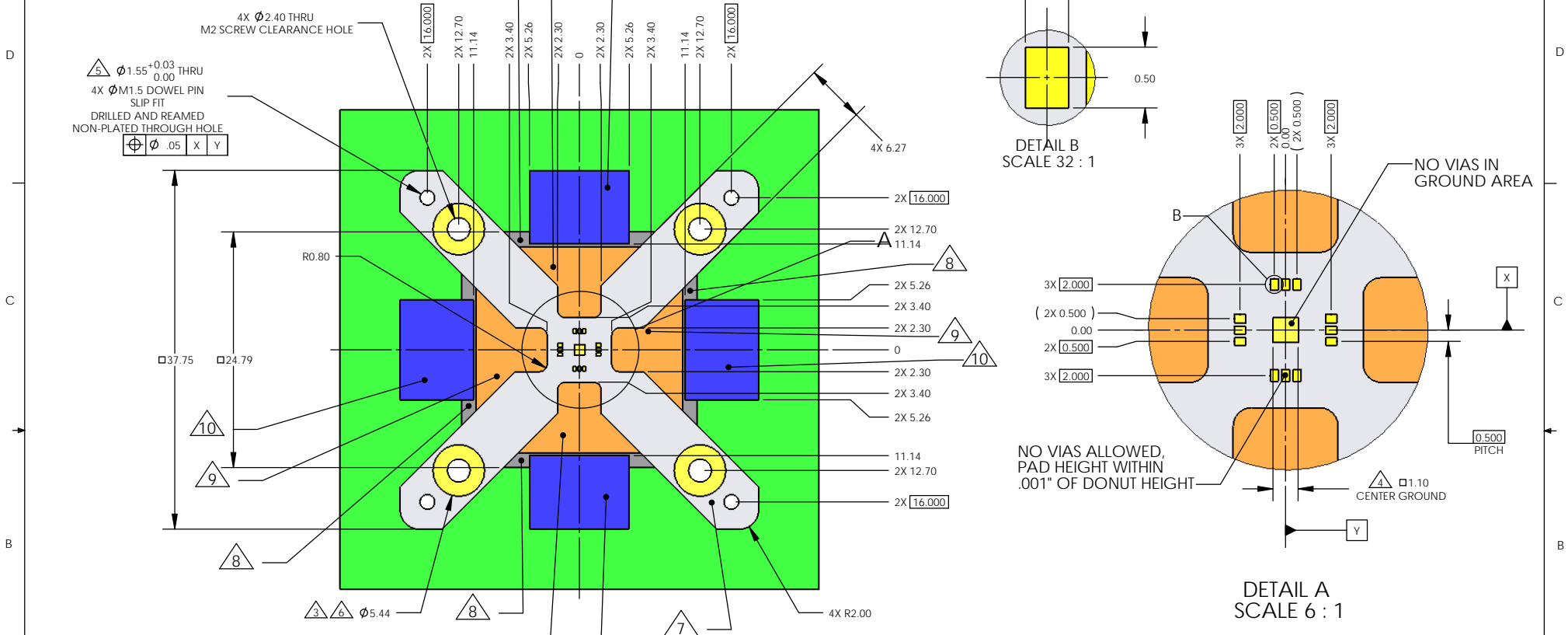


**PROPRIETARY AND CONFIDENTIAL**  
 THE INFORMATION CONTAINED IN THIS DRAWING IS THE SOLE PROPERTY OF ARDENT CONCEPTS, INC. ANY REPRODUCTION IN PART OR AS A WHOLE WITHOUT THE WRITTEN PERMISSION OF ARDENT CONCEPTS, INC. IS PROHIBITED.

REVISIONS			
REV.	DESCRIPTION	DATE	APPROVED
A	RELEASED; ECN11-0764	4/29/11	DJI



- NOTES:
- THIS DRAWING SHOWS A PATTERN FOR A 3x3, 0.50mm PITCH DEVICE WITH 12 PERIMETER LEADS AND A GROUND SLUG.
  - CENTER OF DEVICE PATTERN TO BE COINCIDENT WITH CENTER OF PAD PATTERN ON PERFORMANCE BOARD
  - PLATED DONUTS AROUND MOUNTING HOLES TO BE SAME HEIGHT AS PADS ON PERFORMANCE BOARD
  - PAD TO PAD TO MOUNTING DONUT COPLANARITY TO BE WITHIN .001".
  - TOOLING HOLES TO BE NON-PLATED THRU HOLES DRILLED AND REAMED TO SIZE
  - RECOMMENDED PLATING FOR PADS .000200" NICKEL UNDER .000050" GOLD MINIMUM.
  - THERE SHOULD BE NO SOLDERMASK UNDER THE SOCKET AT ALL.
  - 0.116" DECOUPLING CLEARANCE
  - 0.070" CLEARANCE TIL GUIDE PLATE
  - 0.053" LID LATCH CLEARANCE

<b>METRIC</b> UNLESS OTHERWISE SPECIFIED.		DRAWN: DJI	DATE: 4/27/11
TOLERANCES: ANGLES: ±3		CHECKED:	ENG APPR:
X.X ± .1 X.XX ± .05 X.XXX ± .025			

**ARDENT CONCEPTS**  
Manufacturing and Assembly Solutions  
 4 MERRILL INDUSTRIAL DR, SUITE 102  
 HAMPTON, NH 03842  
 (603) 926-2517

CHANGE	NOTE	PROJECTION	SIZE: <b>B</b>	TITLE: 3X3, 12LD, 0.50mm FOOTPRINT SPECIFICATION
MATERIAL	---	---	INTERPRET GEOMETRIC TOLERANCING PER: ANSI Y14.5M 1982	DWG. NO. FFP3X312SN0501
FINISH	---	---	WWW.ARDENTCONCEPTS.COM	SCALE: 5:2   WEIGHT:   SHEET 1 OF 1

A

A