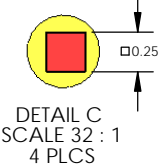
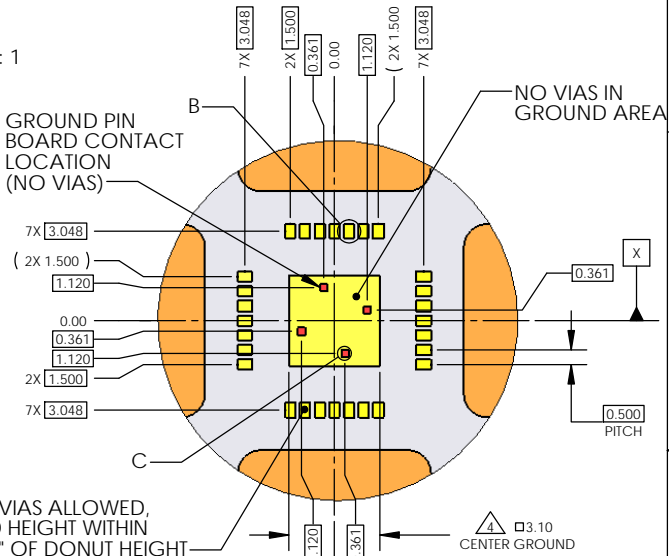
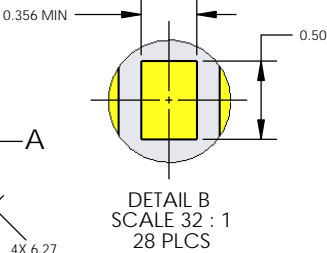
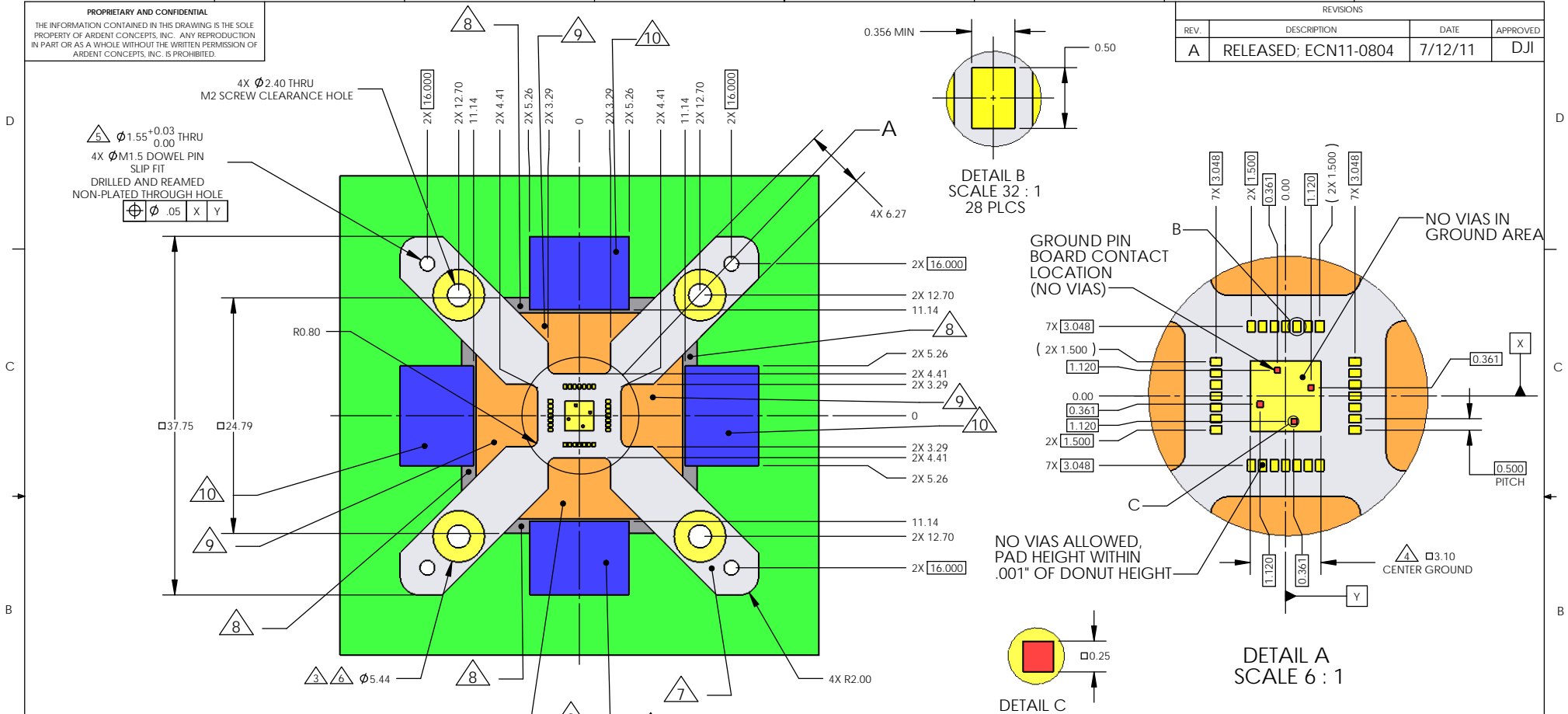


**PROPRIETARY AND CONFIDENTIAL**  
 THE INFORMATION CONTAINED IN THIS DRAWING IS THE SOLE PROPERTY OF ARDENT CONCEPTS, INC. ANY REPRODUCTION IN PART OR AS A WHOLE WITHOUT THE WRITTEN PERMISSION OF ARDENT CONCEPTS, INC. IS PROHIBITED.

REVISIONS			
REV.	DESCRIPTION	DATE	APPROVED
A	RELEASED; ECN11-0804	7/12/11	DJI



- NOTES:
- THIS DRAWING SHOWS A PATTERN FOR A 5x5, 0.50mm PITCH DEVICE WITH 28 PERIMETER LEADS, A GROUND SLUG, AND 4 GROUND LEADS.
  - CENTER OF DEVICE PATTERN TO BE COINCIDENT WITH CENTER OF PAD PATTERN ON PERFORMANCE BOARD
  - PLATED DONUTS AROUND MOUNTING HOLES TO BE SAME HEIGHT AS PADS ON PERFORMANCE BOARD
  - PAD TO PAD TO MOUNTING DONUT COPLANARITY TO BE WITHIN .001"
  - TOOLING HOLES TO BE NON-PLATED THRU HOLES DRILLED AND REAMED TO SIZE
  - RECOMMENDED PLATING FOR PADS .000200" NICKEL UNDER .000050" GOLD MINIMUM.
  - THERE SHOULD BE NO SOLDERMASK UNDER THE SOCKET AT ALL.
  - 0.116" DECOUPLING CLEARANCE
  - 0.070" CLEARANCE TIL GUIDE PLATE
  - 0.053" LID LATCH CLEARANCE

<b>METRIC</b> UNLESS OTHERWISE SPECIFIED. TOLERANCES: ANGLES: ±3 X.X ±.1 X.XX ±.05 X.XXX ±.025		DRAWN: DJI DATE: 7/12/11 CHECKED: ENG APPR:	 4 MERRILL INDUSTRIAL DR, SUITE 102 HAMPTON, NH 03842 (603) 926-2517
CHANGE NOTE PROJECTION MATERIAL --- FINISH ---		SIZE: <b>B</b> TITLE: 5X5, 28LD, 0.50mm FOOTPRINT SPECIFICATION DWG. NO. FFP5X528SN0501 INTERPRET GEOMETRIC TOLERANCING PER: ANSI Y14.5M 1982 WWW.ARDENTCONCEPTS.COM SCALE: 5:2 WEIGHT: SHEET 1 OF 1	