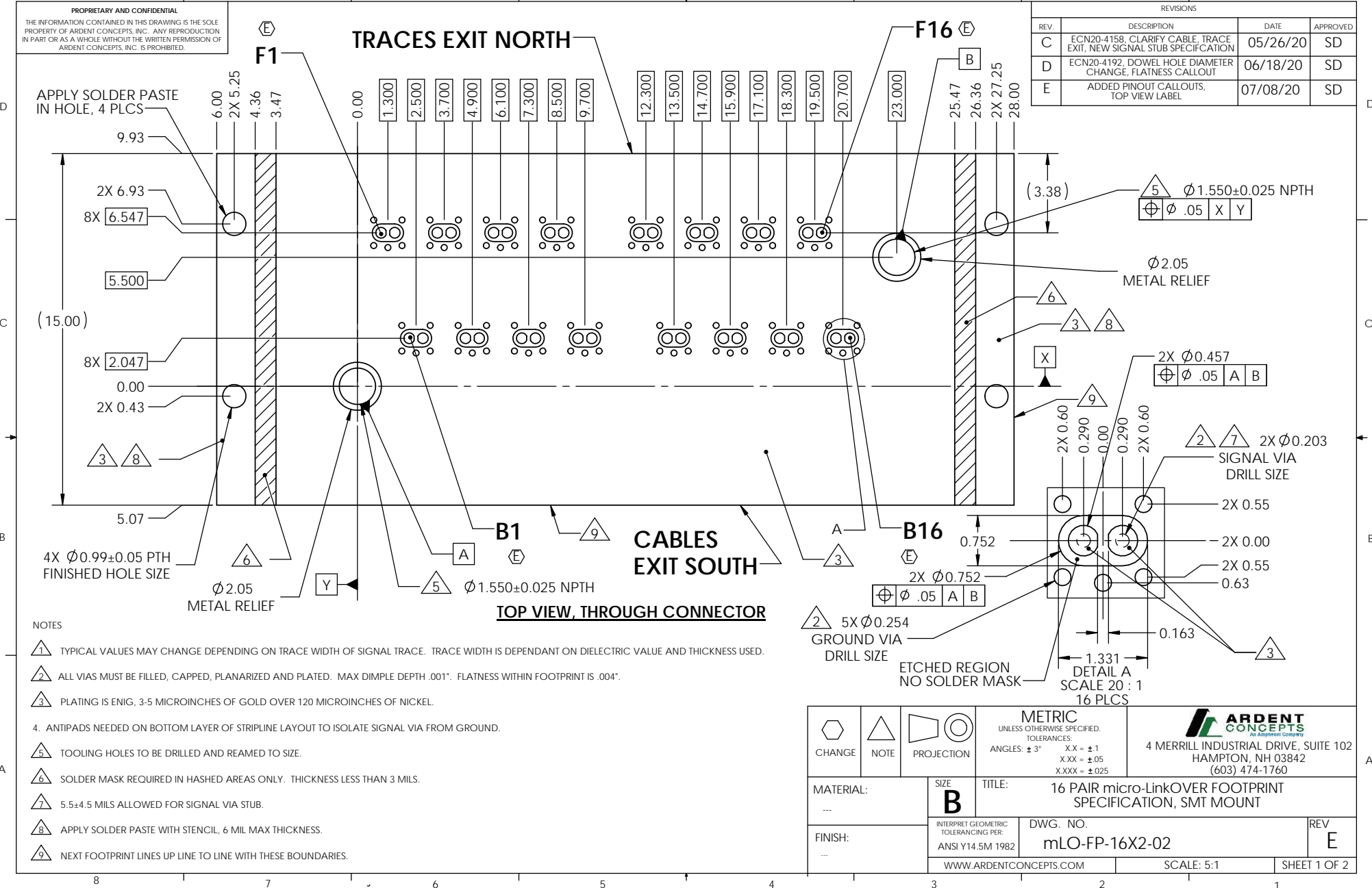


PROPRIETARY AND CONFIDENTIAL
 THE INFORMATION CONTAINED IN THIS DRAWING IS THE SOLE PROPERTY OF ARDENT CONCEPTS, INC. ANY REPRODUCTION IN PART OR AS A WHOLE WITHOUT THE WRITTEN PERMISSION OF ARDENT CONCEPTS, INC. IS PROHIBITED.

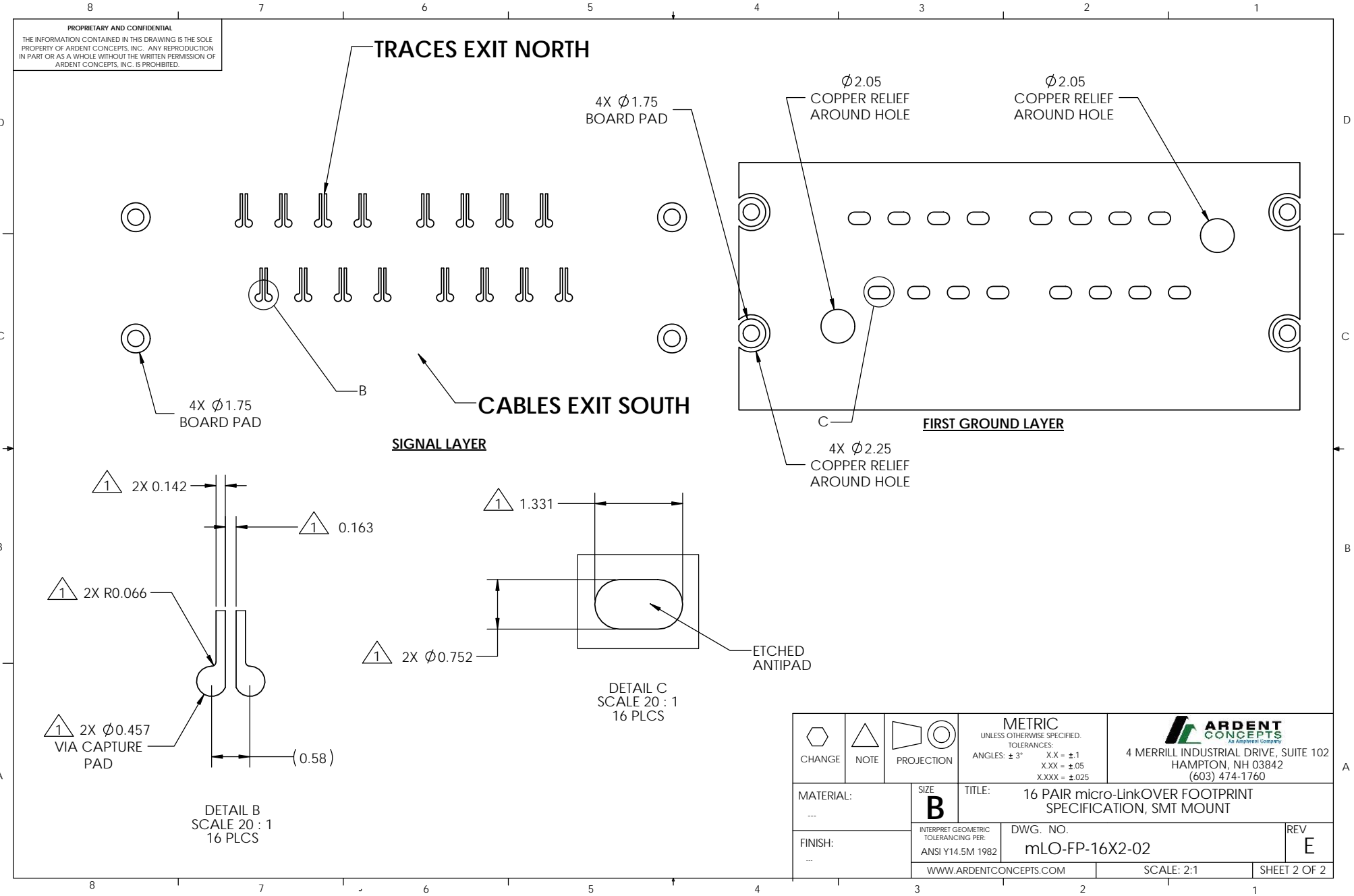
REVISIONS			
REV.	DESCRIPTION	DATE	APPROVED
C	ECN20-4158, CLARIFY CABLE, TRACE EXIT, NEW SIGNAL STUB SPECIFICATION	05/26/20	SD
D	ECN20-4192, DOWEL HOLE DIAMETER CHANGE, FLATNESS CALLOUT	06/18/20	SD
E	ADDED PINOUT CALLOUTS, TOP VIEW LABEL	07/08/20	SD



- NOTES**
- 1. TYPICAL VALUES MAY CHANGE DEPENDING ON TRACE WIDTH OF SIGNAL TRACE. TRACE WIDTH IS DEPENDANT ON DIELECTRIC VALUE AND THICKNESS USED.
 - 2. ALL VIAS MUST BE FILLED, CAPPED, PLANARIZED AND PLATED. MAX DIMPLE DEPTH .001". FLATNESS WITHIN FOOTPRINT IS .004".
 - 3. PLATING IS ENIG, 3-5 MICROINCHES OF GOLD OVER 120 MICROINCHES OF NICKEL.
 - 4. ANTIPADS NEEDED ON BOTTOM LAYER OF STRIPLINE LAYOUT TO ISOLATE SIGNAL VIA FROM GROUND.
 - 5. TOOLING HOLES TO BE DRILLED AND REAMED TO SIZE.
 - 6. SOLDER MASK REQUIRED IN HASHED AREAS ONLY. THICKNESS LESS THAN 3 MILS.
 - 7. 5.5±4.5 MILS ALLOWED FOR SIGNAL VIA STUB.
 - 8. APPLY SOLDER PASTE WITH STENCIL, 6 MIL MAX THICKNESS.
 - 9. NEXT FOOTPRINT LINES UP LINE TO LINE WITH THESE BOUNDARIES.

CHANGE NOTE PROJECTION	METRIC UNLESS OTHERWISE SPECIFIED. TOLERANCES: ANGLES: ± 3° X.X ± 0.1 X.XX ± 0.05 X.XXX ± 0.025	 ARDENT CONCEPTS <small>An Ardent Company</small> 4 MERRILL INDUSTRIAL DRIVE, SUITE 102 HAMPTON, NH 03842 (603) 474-1760	
			MATERIAL: ---
FINISH: ---	INTERPRET GEOMETRIC TOLERANCING PER: ANSI Y14.5M 1982	DWG. NO. mLO-FP-16X2-02	REV E
WWW.ARDENTCONCEPTS.COM		SCALE: 5:1	SHEET 1 OF 2

PROPRIETARY AND CONFIDENTIAL
 THE INFORMATION CONTAINED IN THIS DRAWING IS THE SOLE
 PROPERTY OF ARDENT CONCEPTS, INC. ANY REPRODUCTION
 IN PART OR AS A WHOLE WITHOUT THE WRITTEN PERMISSION OF
 ARDENT CONCEPTS, INC. IS PROHIBITED.



CHANGE NOTE PROJECTION	METRIC UNLESS OTHERWISE SPECIFIED: TOLERANCES: ANGLES: ± 3° X.X = ± 1 X.XX = ± 0.05 X.XXX = ± 0.025	 ARDENT CONCEPTS <small>An Ardent Group Company</small> 4 MERRILL INDUSTRIAL DRIVE, SUITE 102 HAMPTON, NH 03842 (603) 474-1760
FINISH: ---	DWG. NO. mLO-FP-16X2-02	REV E
WWW.ARDENTCONCEPTS.COM		SCALE: 2:1
		SHEET 2 OF 2