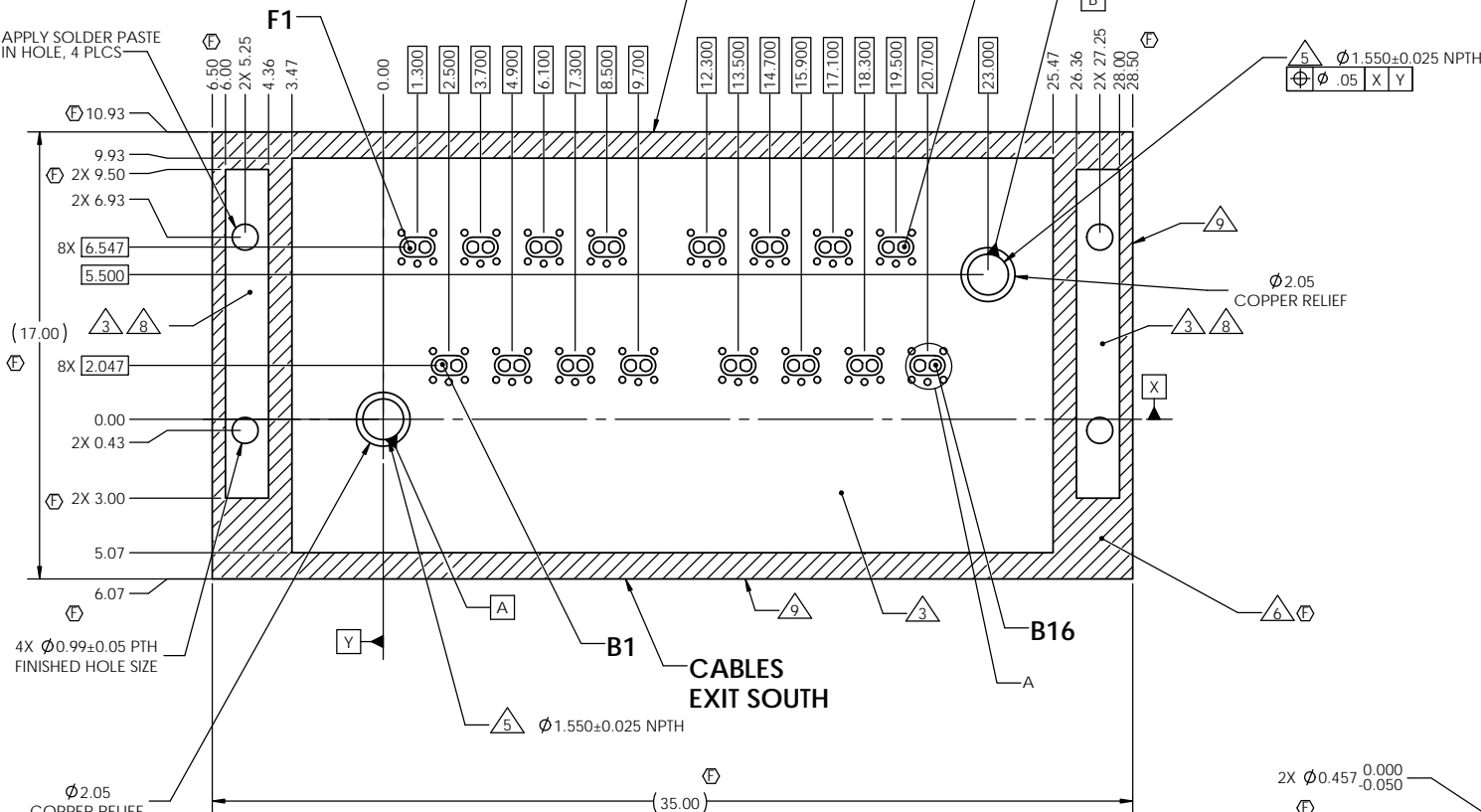


PROPRIETARY AND CONFIDENTIAL
 THE INFORMATION CONTAINED IN THIS DRAWING IS THE SOLE PROPERTY OF ARDENT CONCEPTS, INC. ANY REPRODUCTION IN PART OR AS A WHOLE WITHOUT THE WRITTEN PERMISSION OF ARDENT CONCEPTS, INC. IS PROHIBITED.

TRACES EXIT NORTH



TOP VIEW, THROUGH CONNECTOR

REVISIONS			
REV.	DESCRIPTION	DATE	APPROVED
C	ECN20-4158, CLARIFY CABLE, TRACE EXIT, NEW SIGNAL STUB SPECIFICATION	05/26/20	SD
D	ECN20-4192, DOWEL HOLE DIAMETER CHANGE, FLATNESS CALLOUT	06/18/20	SD
E	ADDED PINOUT CALLOUTS, TOP VIEW LABEL	07/08/20	SD
F	NEW SOLDERMASK DETAILS, UPDATED TOLERANCES FOR ETCHING	06/14/21	SD

5 $\phi 1.550 \pm 0.025$ NPTH
 $\phi .05$ X Y

$\phi 2.05$ COPPER RELIEF

6 ϕ

2X $\phi 0.457$
 ϕ

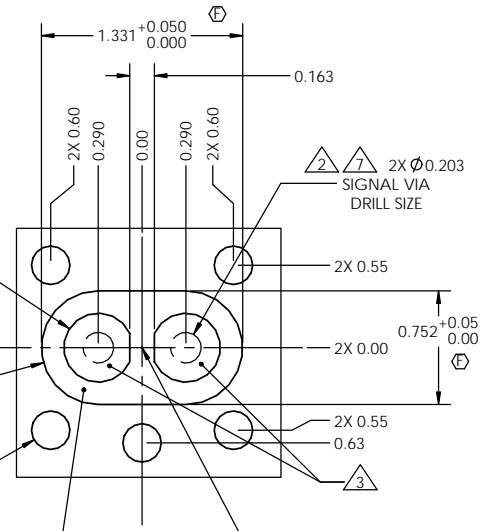
(2X $\phi 0.752$)

2 5X $\phi 0.254$ GROUND VIA DRILL SIZE

ETCHED REGION NO SOLDER MASK

DETAIL A SCALE 40:1 16 PLCS

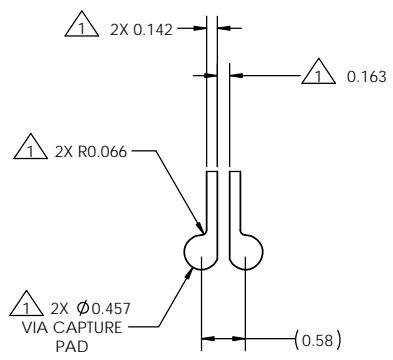
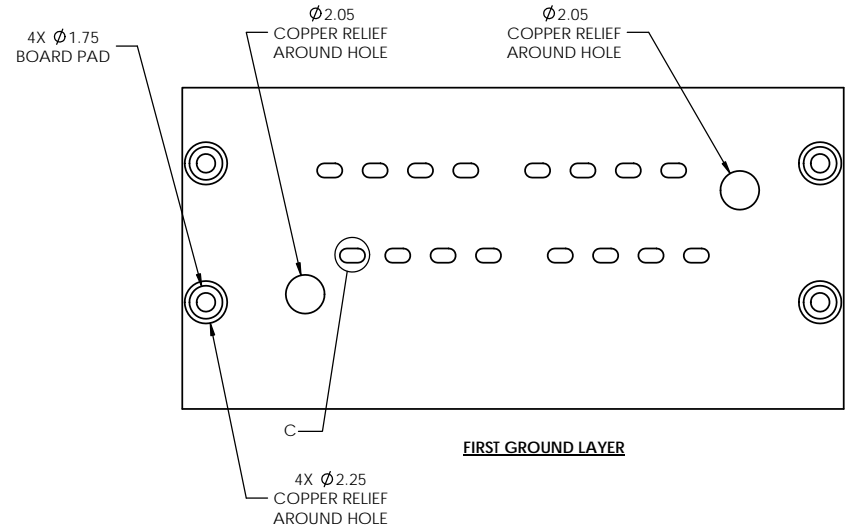
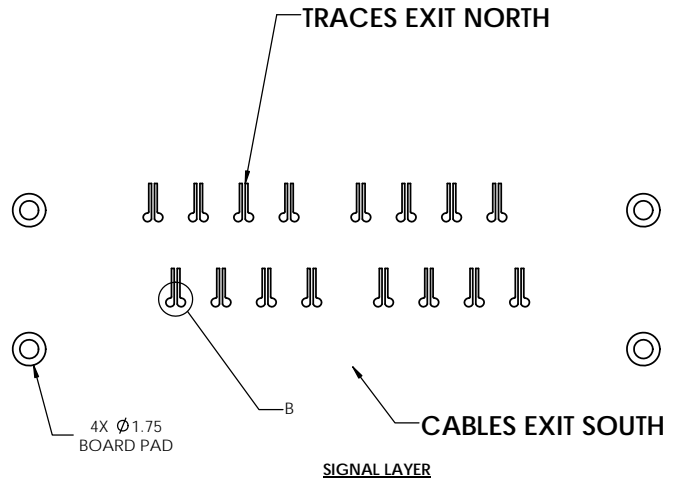
$\phi .05$ A B ϕ
 ALL ETCHED GEOMETRY



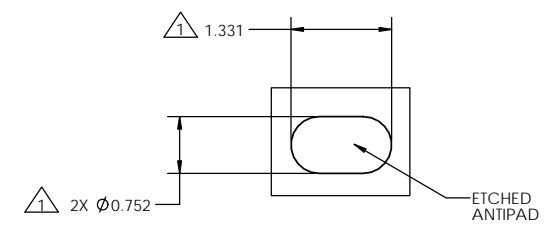
- NOTES
- 1. TYPICAL VALUES MAY CHANGE DEPENDING ON TRACE WIDTH OF SIGNAL TRACE. TRACE WIDTH IS DEPENDANT ON DIELECTRIC VALUE AND THICKNESS USED.
 - 2. ALL VIAS MUST BE FILLED, CAPPED, PLANARIZED AND PLATED. MAX DIMPLE DEPTH .001". FLATNESS WITHIN FOOTPRINT IS .004".
 - 3. PLATING IS ENIG, 3-5 MICROINCHES OF GOLD OVER 120 MICROINCHES OF NICKEL.
 - 4. ANTIPADS NEEDED ON BOTTOM LAYER OF STRIPLINE LAYOUT TO ISOLATE SIGNAL VIA FROM GROUND.
 - 5. TOOLING HOLES TO BE DRILLED AND REAMED TO SIZE.
 - 6. SOLDER MASK REQUIRED IN HASHED AREAS ONLY. THICKNESS LESS THAN 3 MILS. COPPER PLANE TO BE UNINTERRUPTED UNDER THE SOLDERMASK.
 - 7. 5.5x4.5 MILS ALLOWED FOR SIGNAL VIA STUB.
 - 8. APPLY SOLDER PASTE WITH STENCIL, 6 MIL MAX THICKNESS.
 - 9. NEXT FOOTPRINT LINES UP LINE TO LINE WITH THESE BOUNDARIES.

CHANGE	NOTE	PROJECTION	MILLIMETERS UNLESS OTHERWISE SPECIFIED.	ARDENT CONCEPTS AN ARDENT COMPANY 4 MERRILL INDUSTRIAL DRIVE, SUITE 102 HAMPTON, NH 03842 (603) 474-1760
MATERIAL NOTED	SIZE	TITLE:	TOLERANCES: ANGLES: $\pm 3^\circ$ X.X = ± 1 X.XX = ± 0.05 X.XXX = ± 0.025	
FINISH NOTED	INTERPRET GEOMETRIC TOLERANCING PER: ANSI Y14.5M 1982	DWG. NO.	REV	
www.ardentconcepts.com		SCALE: 5:1	WEIGHT:	SHEET 1 OF 2

PROPRIETARY AND CONFIDENTIAL
 THE INFORMATION CONTAINED IN THIS DRAWING IS THE SOLE
 PROPERTY OF ARDENT CONCEPTS, INC. ANY REPRODUCTION
 IN PART OR AS A WHOLE WITHOUT THE WRITTEN PERMISSION OF
 ARDENT CONCEPTS, INC. IS PROHIBITED.



DETAIL B
 SCALE 20 : 1
 16 PLCS



DETAIL C
 SCALE 20 : 1
 16 PLCS

CHANGE NOTE PROJECTION		MILLIMETERS UNLESS OTHERWISE SPECIFIED. TOLERANCES: ANGLES: ±3° X.X = ±1 X.XX = ±0.05 X.XXX = ±0.025		 ARDENT CONCEPTS <small>An Ardent Group</small> 4 MERRILL INDUSTRIAL DRIVE, SUITE 102 HAMPTON, NH 03842 (603) 474-1760	
MATERIAL		SIZE C	TITLE: 16 PAIR micro-LinkOVER FOOTPRINT SPECIFICATION, SMT MOUNT		
FINISH NOTED		INTERPRET GEOMETRIC TOLERANCING PER: ANSI Y14.5M 1982	DWG. NO. mLO-FP-16X2-02	REV F	
WWW.ARDENTCONCEPTS.COM		SCALE: 2:1	WEIGHT:	SHEET 2 OF 2	